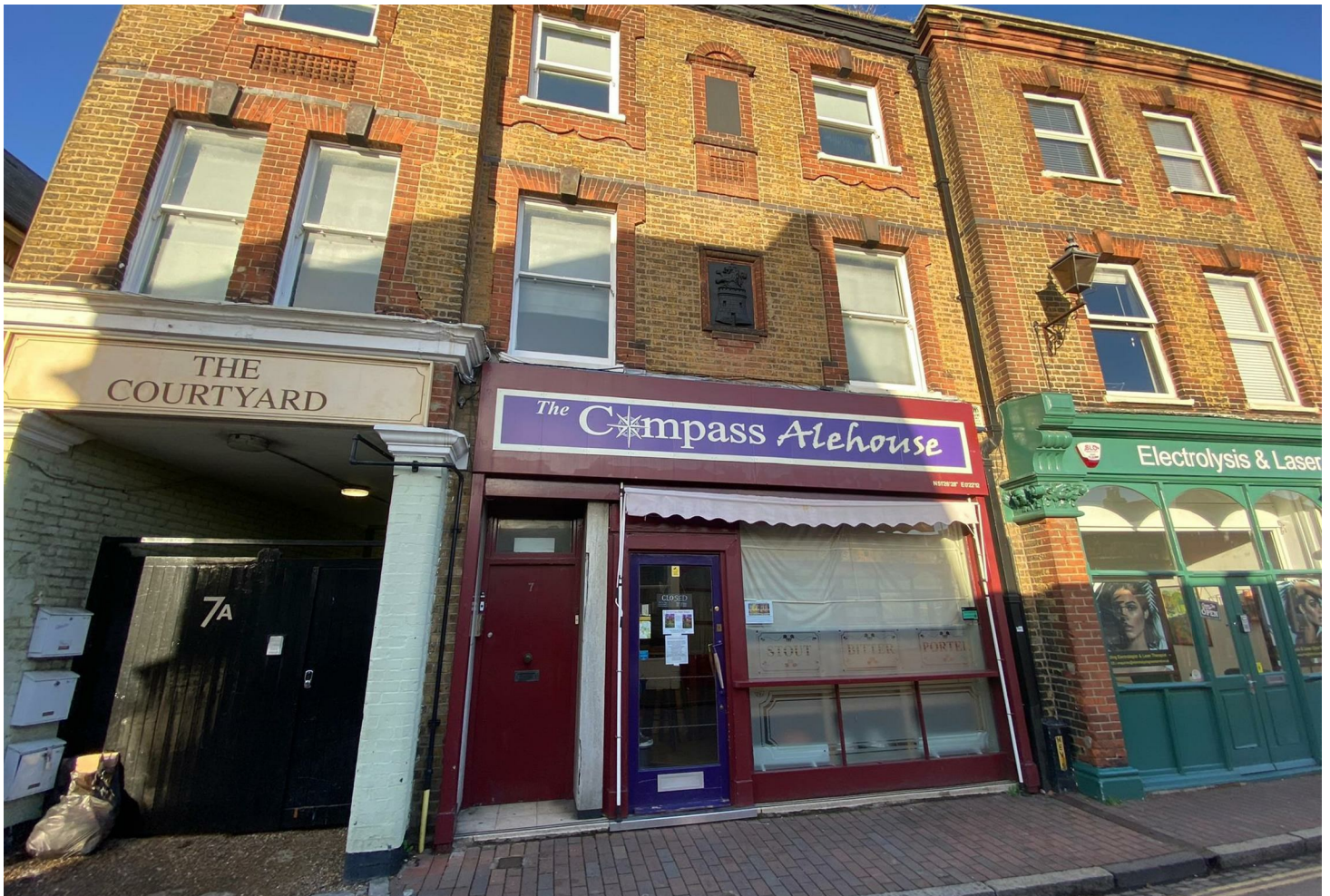




Sealeys
Walker ■ Jarvis



7b Manor Road, Gravesend, Kent, DA12 1AA

Two bedroom flat located in Gravesend Town Centre. Fitted kitchen with oven and hob. White shower suite. Gas central heating throughout.

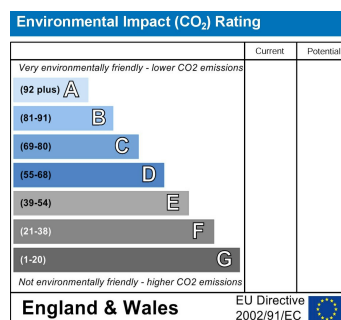
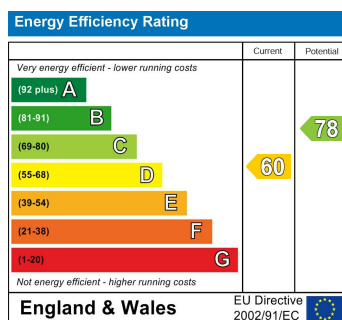
Due to how close the property is to the town centre, there is no parking with the property.

Gravesend Borough Council Tax Band B.

- TWO BEDROOM FLAT
- CLOSE TO TOWN CENTRE
- AVAILABLE IMMEDIATELY
- GAS CENTRAL HEATING
- FITTED KITCHEN
- NO PARKING



£950 Per Month



184 Parrock Street
Gravesend
Kent
DA12 1EN

www.sealeys.co.uk
Email: lettings@sealeys.co.uk
Tel. (01474) 369368



Agents Note: Whilst every care has been taken to prepare these marketing particulars, they are for guidance purposes only. These details, description and measurements do not form part of a contract and whilst every effort has been made to ensure accuracy this cannot be guaranteed. Interested parties must satisfy themselves by inspection or otherwise as to the correctness of them. Floor plans are not to scale and are for illustration purposes only. Any equipment, fixtures and fittings or any item referred to have not been tested unless specifically stated.